



Certificate of Analysis
Compliance Test

Client Information:

HEMP DEPOT
3147 CENTURY STREET
COLORADO SPRINGS, CO 80907

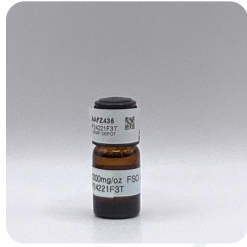
Batch # P24221F3T
Batch Date: 2024-09-24
Extracted From: Hemp

Test Reg State: Florida

Order # HEM240924-020001
Order Date: 2024-09-24
Sample # AAFZ435

Sampling Date: 2024-09-25
Lab Batch Date: 2024-09-25
Completion Date: 2024-09-30

Initial Gross Weight: 28.516 g



Product Image



Delta 8/Delta 10 Potency 13 - (LCUV)
Specimen Weight: 101.200 mg

Tested

Potency Summary

Analyte	LOD (%)	LOQ (%)	Result (mg/g)	Result (%)
CBD	5.40E-5	0.015	62.220	6.222
Delta-8 THC	2.60E-5	0.015	61.560	6.156
CBG	2.48E-4	0.015	5.950	0.595
CBDV	6.50E-5	0.015	1.660	0.166
CBN	1.40E-5	0.015	0.170	0.017
CBC	1.80E-5	0.015	<LOQ	<LOQ
CBDA	1.00E-5	0.015	<LOQ	<LOQ
CBGA	8.00E-5	0.015	<LOQ	<LOQ
Delta-10 THC	3.00E-6	0.015	<LOQ	<LOQ
Delta-9 THC	1.30E-5	0.015	<LOQ	<LOQ
Delta6a10a-THC	8.47E-5	0.015	<LOQ	<LOQ
THCA-A	3.20E-5	0.015	<LOQ	<LOQ
THCV	7.00E-6	0.015	<LOQ	<LOQ
Total Active CBD			62.220	6.222
Total Active THC			<LOQ	<LOQ

Total Delta 8 6.156%	Total Delta 10 None Detected
Total Active THC None Detected	Total Active CBD 6.222%
Total CBG 0.595%	Total CBN 0.017%
Total Cannabinoids 13.156%	

Aixia Sun
Aixia Sun Lab Director/Principal Scientist
D.H.Sc., M.Sc., B.Sc., MT (AAB)



Definitions and Abbreviations used in this report: Total Active CBD = CBD + (CBD-A * 0.877), *Total CBDV = CBDV + (CBDVA * 0.867), Total Active THC = THCA-A * 0.877 + Delta 9 THC, Total THC = THCV + (THCVA * 0.87), CBG Total = (CBGA * 0.878) + CBG, CBN Total = (CBNA * 0.876) + CBN, Total CBC = CBC + (CBCA * 0.877), Total THC-O-Acetate = Delta 8 THC-O-Acetate + Delta 9 THC-O-Acetate, Total THCP = Delta8-THCP + Delta9-THCP, Total Cannabinoids = Total percentage of cannabinoids within the sample. (mg/ml) = Milligrams per Milliliter, LOQ = Limit of Quantitation, LOD = Limit of Detection, Dilution = Dilution Factor, (ppb) = Parts per Billion, (%) = Percent, (cfu/g) = Colony Forming Unit per Gram, (µg/g) = Microgram per Gram, (ppm) = Parts per Million, (ppm) = (µg/g), (aw) = Water Activity, (mg/Kg) = Milligram per Kilogram. ACS uses simple acceptance criteria. Passed - Analyte/microbe is not detected or is at the level below the action limit per FL rule 64ER20-39, 5K-4.036, 5K-4.034 Sample not received via laboratory sampling. Failed - Analyte/microbe is at the level that equal or above the action limit per FL rule 64ER20-39, 5K-4.036, 5K-4.034 Sample not received via laboratory sampling.
This report shall not be reproduced, without written approval, from ACS Laboratory. The results of this report relate only to the material or product analyzed. Test results are confidential unless explicitly waived otherwise. ACS Laboratory is accredited to the ISO/IEC 17025:2017 Standard.